

focus on furniture

**VICTORIAN RALLY**

**CHAMPIONSHIP**

**E**ast **G**ippsland **S**tages

**Round 3**

**Incorporating MtAlfred Stages Multiclub Rally**

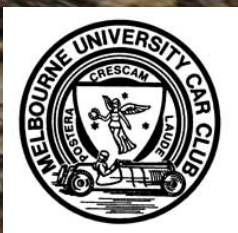
**May 30<sup>th</sup> 2015**

Darren Windus / Jamie Sargeant – winners East Gippsland Stages 2014

Picture by John Douth



**SPECTATOR GUIDE**



Promoted by Melbourne University Car Club Inc Web address: [www.mucc.net.au](http://www.mucc.net.au)

email: [egs@mucc.net.au](mailto:egs@mucc.net.au)

## **Spectator Instructions**

**(Please Read)**

1. Spectators are directed to view the cars whilst standing within the markers indicating the limits of the controlled spectator area – spectating outside those areas indicated is prohibited.
2. Spectators must not stand in prohibited areas, and must at all times stand behind the bunting which marks the spectator area.
3. The instructions of the Safety Officer/Marshals must be obeyed. The Safety Officer has the power to postpone a stage until the spectator point is controlled to his satisfaction.
4. It is prohibited to ignore the spectator instructions and find your own way around. Not only is there a danger of meeting up with an oncoming rally vehicle, but many roads have fallen trees, wash-aways etc. which are potentially hazardous for the driver. The main spectator route has been surveyed and is safe.

### **DISCLAIMER**

#### **EXCLUSION OF LIABILITY, RELEASE AND ASSUMPTION OF RISK**

##### **MOTOR SPORT IS DANGEROUS**

In exchange for being able to attend or participate in the event, you agree:

- to release Confederation of Australian Motor Sport Ltd ("**CAMS**") and Australian Motor Sport Commission Ltd, promoters, sponsor organisations, land owners and lessees, organisers of the event, their respective servants, officials, representatives and agents (collectively, the "**Associated Entities**") from all liability for your death, personal injury (including burns), psychological trauma, loss or damage (including property damage) ("**harm**") howsoever arising from your participation in or attendance at the event, except to the extent prohibited by law;
- that CAMS and the Associated Entities do not make any warranty, implied or express, that the event services will be provided with due care and skill or that any materials provided in connection with the services will be fit for the purpose for which they are supplied; and
- to attend or participate in the event at your own risk.

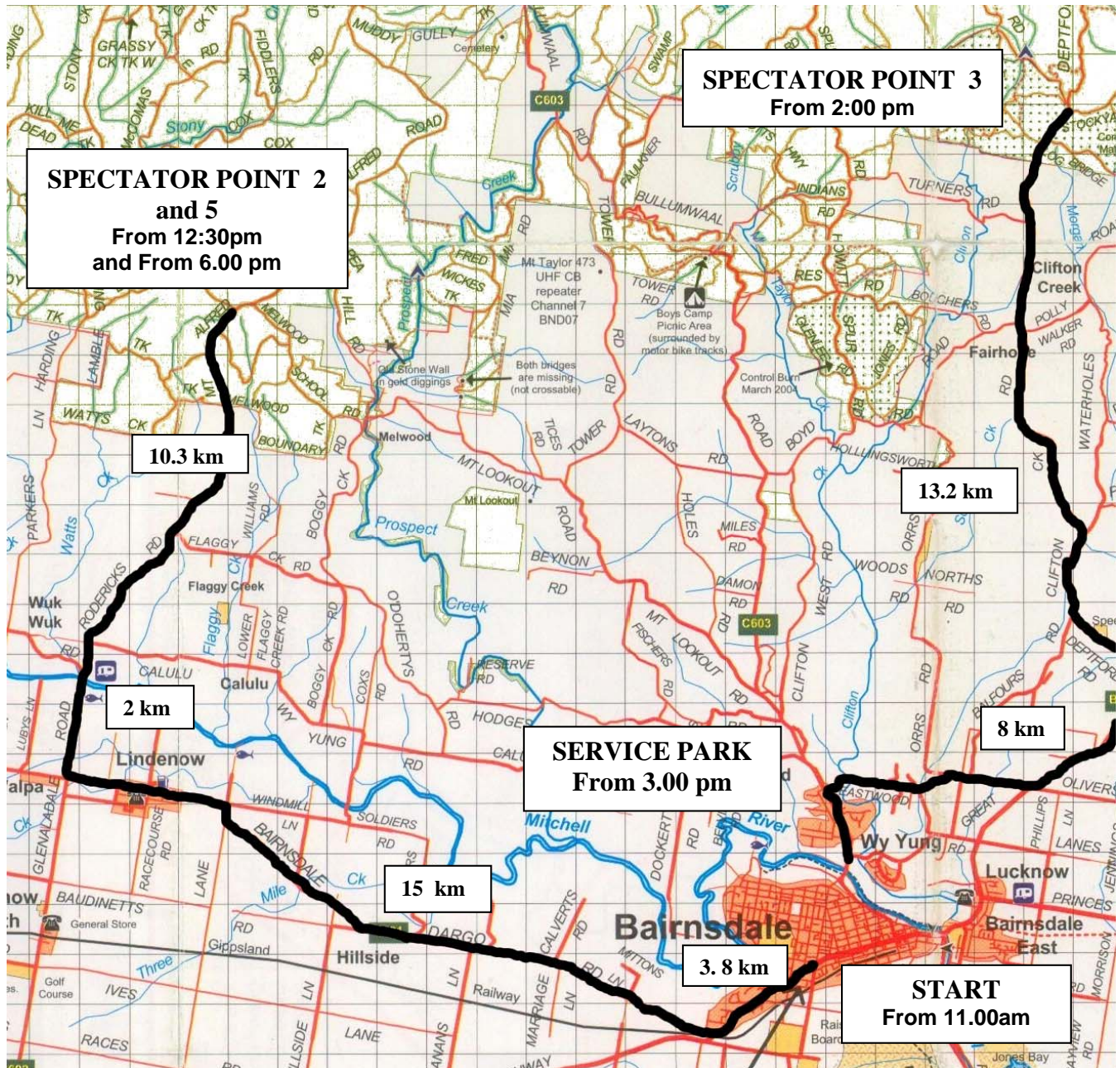
You acknowledge that:

- the risks associated with attending or participating in the event include the risk that you may suffer harm as a result of:
  - motor vehicles (or parts of them) colliding with other motor vehicles, persons or property;
  - acts of violence and other harmful acts (whether intentional or inadvertent) committed by persons attending or participating in the event; and
  - the failure or unsuitability of facilities (including grand-stands, fences and guard rails) to ensure the safety of persons or property at the event.
- motor sport is dangerous and that accidents causing harm can and do happen and may happen to you.

You accept the conditions of, and acknowledge the risks arising from, attending or participating in the event and being provided with the event services by CAMS and the Associated Entities.



# Spectator Point Overview



## IMPORTANT NOTES:

Approximate distances between junctions shown on map.

PLEASE DO NOT FOLLOW COMPETITION CARS INTO THE FOREST

## TRAVEL TIMES:

|         |                       |   |                       |            |
|---------|-----------------------|---|-----------------------|------------|
| Between | BAIRNSDALE            | & | SPECTATOR POINT 2 & 5 | 40 minutes |
| Between | BAIRNSDALE            | & | SPECTATOR POINT 3     | 30 minutes |
| Between | SPECTATOR POINT 2 & 5 | & | WY YUNG SERVICE PARK  | 40 minutes |
| Between | WY YUNG SERVICE PARK  | & | SPECTATOR POINT 5     | 40 minutes |

# Overview of Spectator Points

There are several opportunities to see the cars.

1. At the START POINT:  
The start point in Main St. BAIRNSDALE  
Cars assemble from 11.00 am, with the first cars flagged away at 12:00 noon.
2. SPECTATOR POINT 2 -- At the junction of Mount Alfred Road and Stoney Creek Road, Travel via Bainsdale Dargo Road through Lindenow then follow Spectator Way signs. First car due 12.30pm
3. SPECTATOR POINT 3 -- At the junction of Deptford Road and Blacks Camp Road  
Travel via Great Alpine Road then Deptford Road through Clifton Creek. Follow Spectator Way signs . First car due 2:15 pm
4. At the SERVICE PARK at the Wy Yung football ground, around the Sports oval.  
Cars are at service from 3:00 pm First Car leaves for night stages around 5:30 pm.
5. SPECTATOR POINT 5 – Again at the junction of Mount Alfred Road and Stony Creek Road, Travel via Bainsdale Dargo Road through Lindenow then follow Spectator Way signs. First car due 6.30pm
6. At the FINISH POINT: This is at the Wy Yung football ground. First car due 8:00 pm

## Spectator Point 1: Rally Start

**Assembly area adjacent to Water Tower,  
Main Street (Princes Highway), Bairnsdale.**

Car 1 due approx. **11.00** am .

Competing Cars will assemble near the water tower before setting off on the daylight stages of the event.

Spectators will be able to view the cars and speak with competitors whilst they wait for their departure time. First car will be flagged away at 12.00 noon with cars leaving the area at 2 minute intervals

# Spectator Point 2 and 5

## Junction of Mount Alfred (Lindenow-Bullumwaal Road) and Melwood School Road.

Car 1 due approx. **12:20 pm daytime and 6:30pm at night**

Allow at least **40 minutes** to travel from the Bairnsdale Start to this point.

The field should take nearly 1.5 hours to pass through this point.

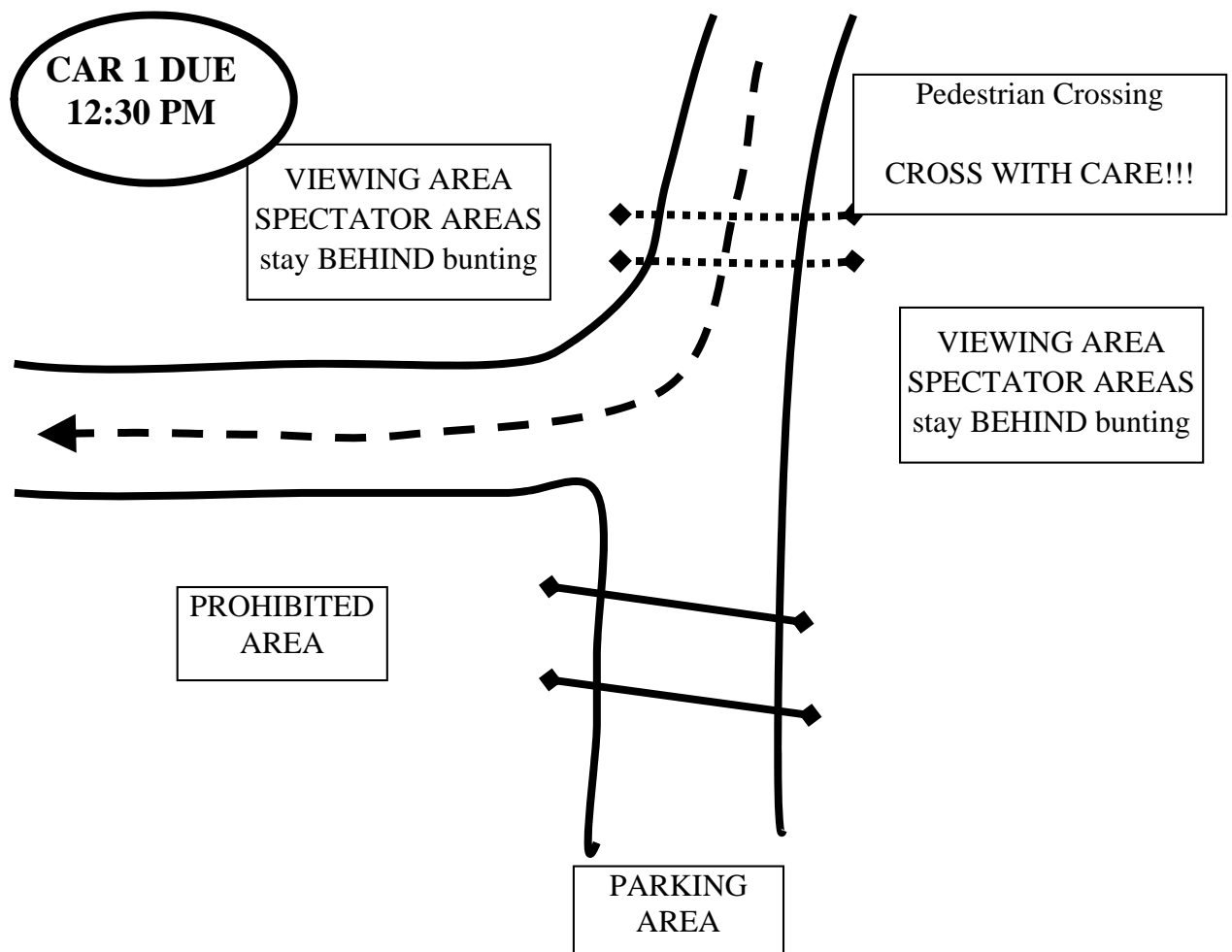
From BAIRNSDALE, proceed west towards Stratford.

Approximately 3.8 km from the Start turn right into Bairnsdale Dargo Road.

Travel 15 km to Lindenow then after 1.5 km turn right into Lindenow-Glenaladale Road towards WUK WUK;

After crossing the Mitchell River at Wuk Wuk, keep right onto Rodericks Road. Follow the main road for a further 8.9 km. U-turn then park facing the way you came.

**CAUTION:** Mount Alfred Rd is a gravel road – drive carefully 40km/h speed limit!!!!



# Spectator Point 3

## Junction of Deptford Road and Blacks Camp Road.

Car 1 due approx. **2:05 pm**.

Allow at least **40 minutes** to travel from the start.

The field should take nearly 1.5 hours to pass through this point.

From Bairnsdale, proceed towards Bruthen along the Great Alpine Road.

After approximately 8.5 km turn left into DEPTFORD ROAD then follow main road to Clifton Creek (approximately 10 km from the Great Alpine Road)

Continue for 3.2 km after Clifton Creek then U-turn and park on the left.

CAUTION: Drive carefully on gravel roads.

FAST APPROACH TO A SHARP BEND.

Stand where directed.

